



The Milking Parlour, Rectory Farm,  
Ledbury HR8 2SQ  
£1,250 Per Calendar Month

TO LET





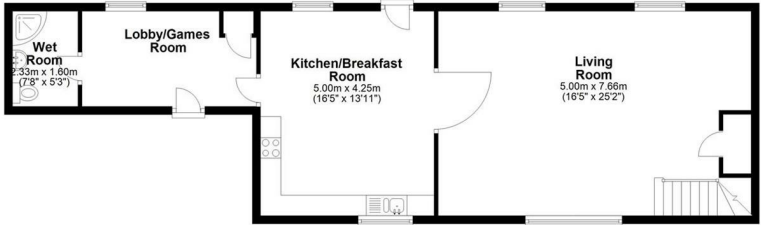
PROPERTY SUMMARY

Situated in the tranquil hamlet of Munsley near Ledbury, a stunning barn conversion, with double glazing and central heating, restored to the highest standard with original features from when it was a milking parlour in the 1950's. The property comprises of a games room/lobby area, downstairs wet room, beautiful fully fitted kitchen, large living room with stairs to first floor, double bedroom, smaller bedroom which fits a double bed and a further single bedroom or study, bathroom. Off road parking, covered outdoor area and a raised terrace patio which is a sun trap and perfect for a BBQ.

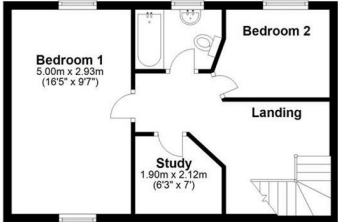
NOTES & COMMENTS

DIRECTIONS

Ground Floor  
Approx. 74.2 sq. metres (798.5 sq. feet)

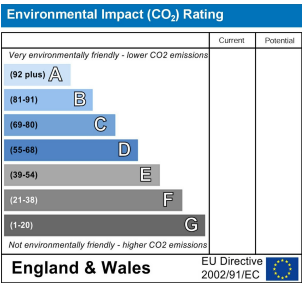
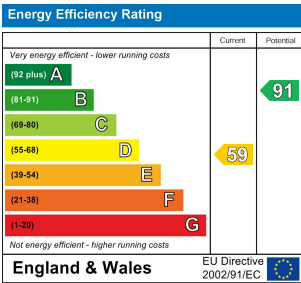


First Floor  
Approx. 39.0 sq. metres (419.3 sq. feet)



Total area: approx. 113.1 sq. metres (1217.8 sq. feet)  
Floorplans are for guidance purposes only and should not be taken as accurate. Brookes Bliss Ltd  
Plan produced using PlanUp.

FEES



Brookes Bliss

These particulars are offered on the understanding that all negotiations are conducted through this company. Neither these particulars, nor oral representations, form part of any offer or contract, and their accuracy cannot be guaranteed.

46 Bridge Street, Hereford, Herefordshire HR4 9DG  
Tel: 01432 343800  
Lettings@brookes.bliss.co.uk

brookesbliss.co.uk

